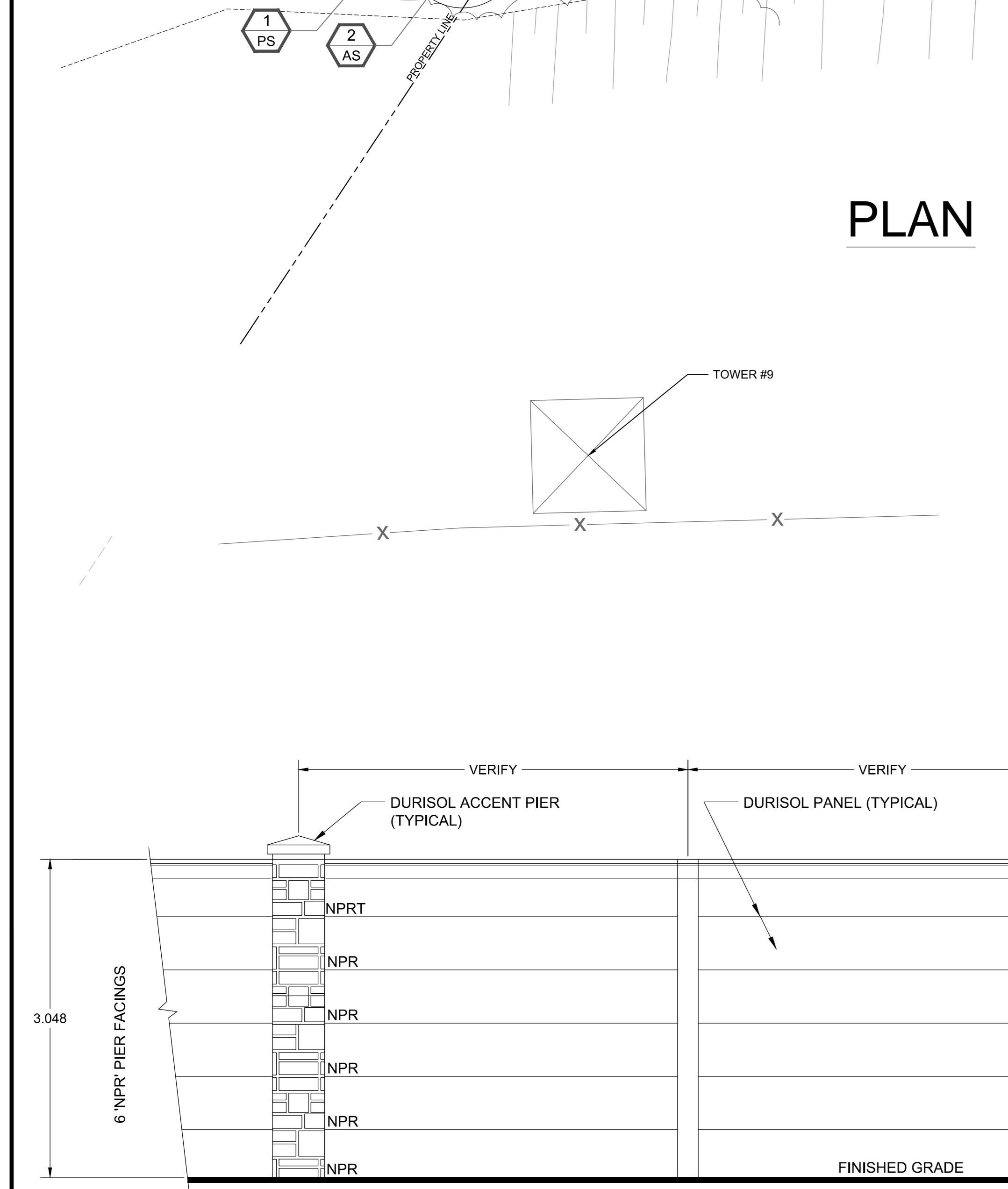


**PLAN**



DURISOL WALL STATION ENCLOSURE NTS.

**SAFE WORKING CONDITION NOTES:**

- PRIOR TO COMMENCING WORK THE CONTRACTOR IS TO BE INSTRUCTED (BY HYDRO ONE) AS TO THE SAFETY CONCERNS WITH REGARDS TO WORKING AROUND ELECTRICITY
- "NO TOUCH" ZONES ARE TO BE SURROUNDED BY HEAVY DUTY SNOW FENCE PRIOR TO ALL WORK COMMENCING
- LAYOUT OF "NO TOUCH ZONE" TO BE COMPLETED BY THE CONTRACT ADMINISTRATOR
- ALL WORK CONDUCTED WITHIN THE INDICATED "SAFE WORKING AREA" IS SUBJECT TO HYDRO ONE "LIMITS OF APPROACH" FOR 230 KV CIRCUITS O.H.S.A. REGULATIONS (SEE OPPOSITE)
- ALL WIRES, CABLES, GUY ANCHORS AND GROUND RODS TO BE CONSIDERED "LIVE" AT ALL TIMES AND ONLY HANDLED UNDER THE SUPERVISION OF HYDRO ONE ELECTRICIANS

**hydro one LIMITS OF APPROACH**

MAINTAIN MAXIMUM CLEARANCES AND INSTALL BARRIERS WHERE PRACTICAL

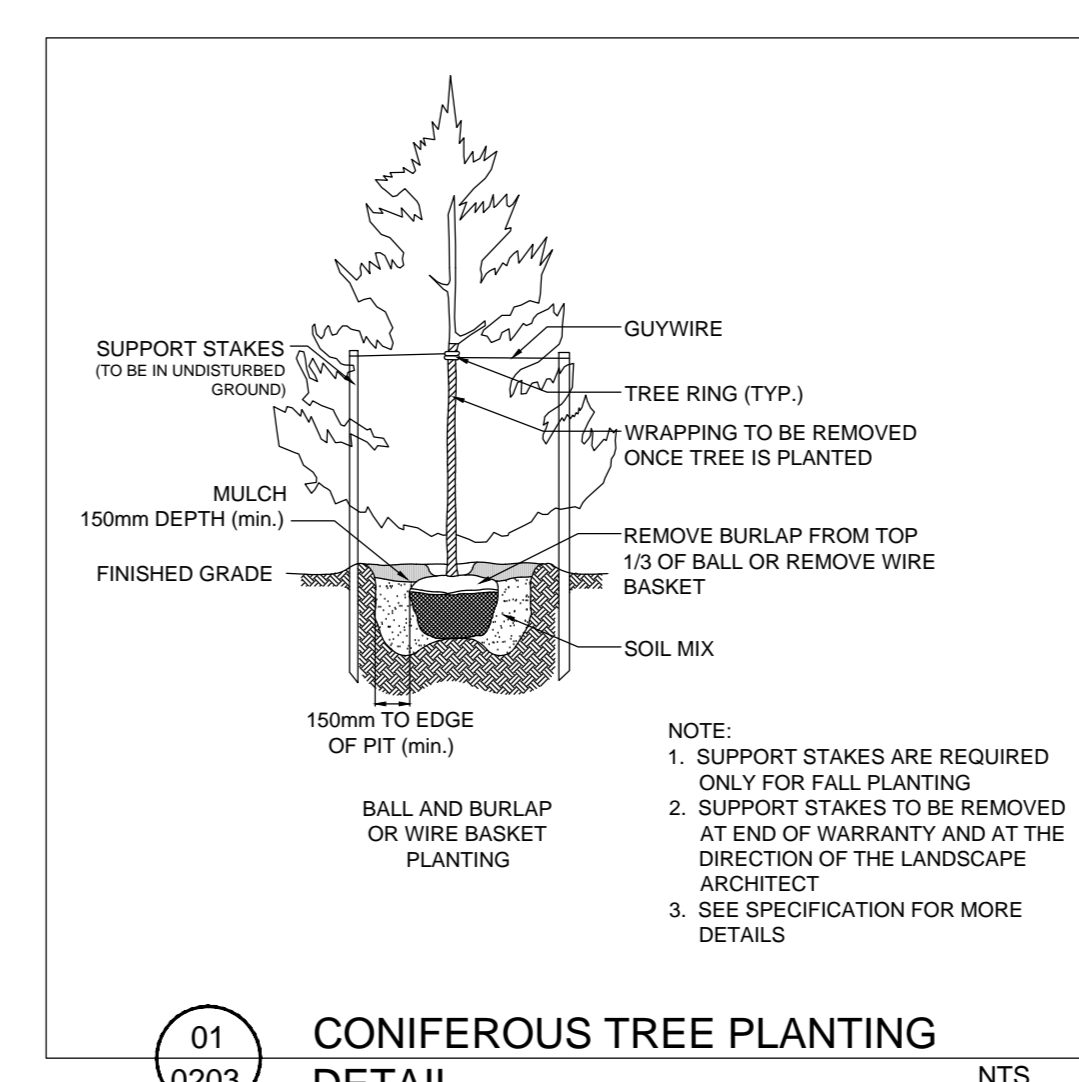
Voltages	PERSONNEL ZONES*		Mobile Work Equipment*	
	O.H.S.A. Minimum	Authorized Worker	O.H.S.A. Minimum	Certified Insulated Booms
750 to 15 kV		0.9 m to 0.3 m (3 ft. to 1 ft.)	0.9 m to 0.3 m (3 ft. to 1 ft.)	>+3 m (1 ft.)
>15 kV to 35 kV	>+3 m	0.9 m to 0.45 m (3 ft. to 1.5 ft.)	0.9 m to 0.45 m (3 ft. to 1.5 ft.)	>+3 m (1.5 ft.)
>35 kV to 50 kV		1.2 m to 0.6 m (4 ft. to 2 ft.)	1.2 m to 0.6 m (4 ft. to 2 ft.)	>+4.5 m (15 ft.)
>50 kV to 150 kV		1.5 m to 0.9 m (5 ft. to 3 ft.)	1.5 m to 0.9 m (5 ft. to 3 ft.)	>+4.5 m (15 ft.)
>150 kV to 250 kV	>+4.5 m	2.1 m to 1.2 m (7 ft. to 4 ft.)	2.1 m to 1.2 m (7 ft. to 4 ft.)	>+4.5 m (15 ft.)
>250 kV to 500 kV	>+6 m	3.7 m to 2.75 m (12 ft. to 9 ft.)	3.7 m to 2.75 m (12 ft. to 9 ft.)	>+6 m (19 ft.)

\* For detailed information relating to Limits of Approach Conditions and Restrictions refer to Electrical Utility Safety Rule #129 and trade specific documentation

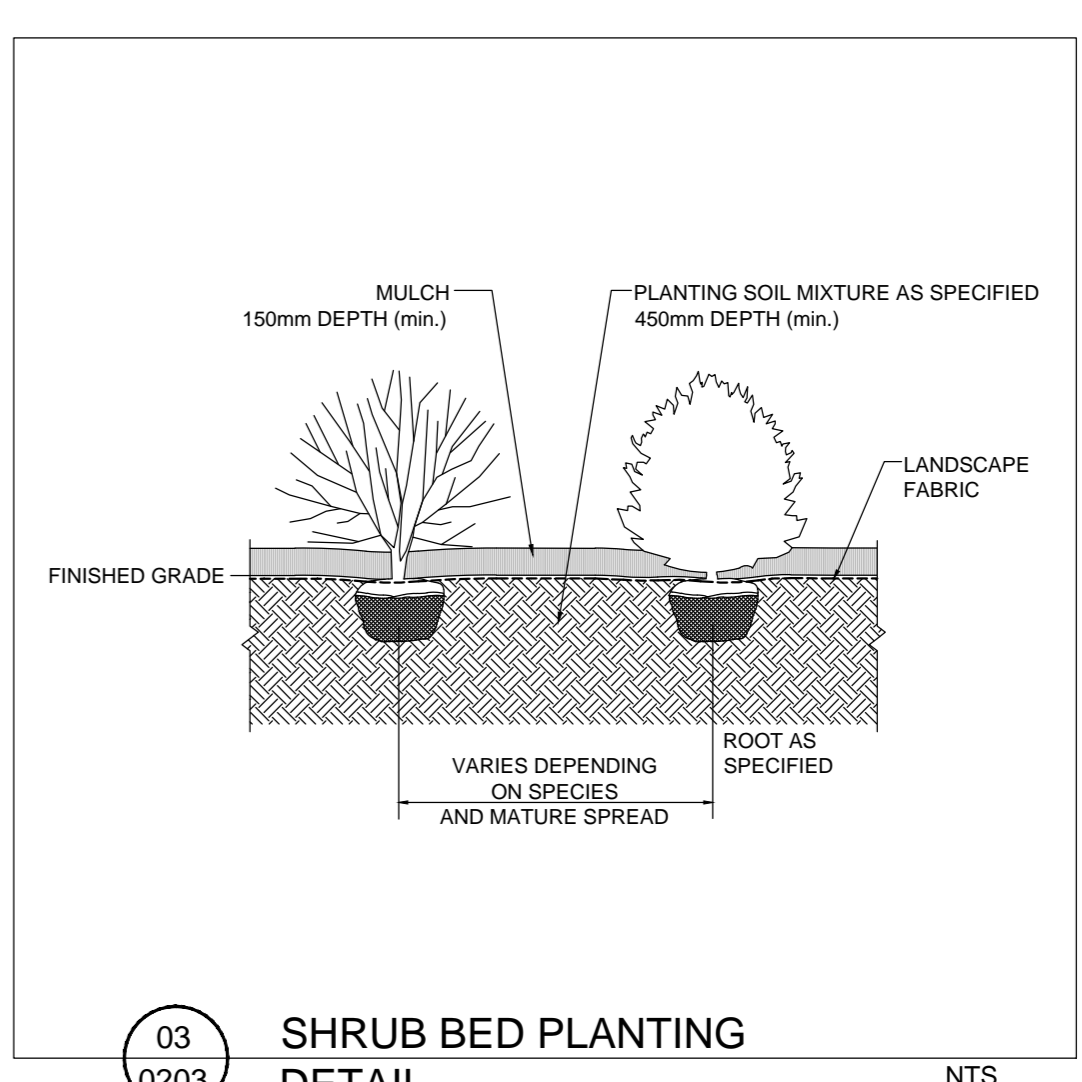
**PLANT LIST**

KEY	QTY	BOTANICAL/COMMON NAMES	SIZES	REMARKS
FS	2	<i>Fagus sylvatica 'fastigiata'</i> PYRAMIDAL EUROPEAN BEECH	45.0m Cal. WB.	MAINTAIN SPACING PYRAMIDAL BEECH
AS	2	<i>Acer saccharinum</i> SILVER MAPLE	60.0m Cal. WB.	
QR	2	<i>Quercus rubra</i> RED OAK	60.0m Cal. WB.	
PG <sub>1</sub>	1	<i>Picea glauca</i> WHITE SPRUCE	300cm ht. WB.	SPECIMEN
PG <sub>3</sub>	3	<i>Picea glauca</i> WHITE SPRUCE	250cm ht. WB.	
PS	2	<i>Pinus strobus</i> EASTERN WHITE PINE	250cm ht. WB.	
TC	11	<i>Tsuga canadensis</i> EASTERN REDDOCK	250cm ht. WB.	
TO	10	<i>Thuja occidentalis</i> EASTERN WHITE CEDAR	250cm ht. WB.	
CS	2	<i>Cornus sericea</i> RED OSBER DOGWOOD	50.0cm 3.0gal. container.	
f	2	<i>Forysthia ovata 'ottawa'</i> OTTAWA FORSYTHIA	50.0cm 3.0gal. container.	
bxc	7	<i>Taxus cuspidata 'capitata'</i> CLIPPED PYRAMIDAL JAPANESE YEW	125cm B&B.	
txn	5	<i>Taxus x cuspidata 'hana'</i> DWARF JAPANESE YEW	40.0cm 3.0 gal. container.	

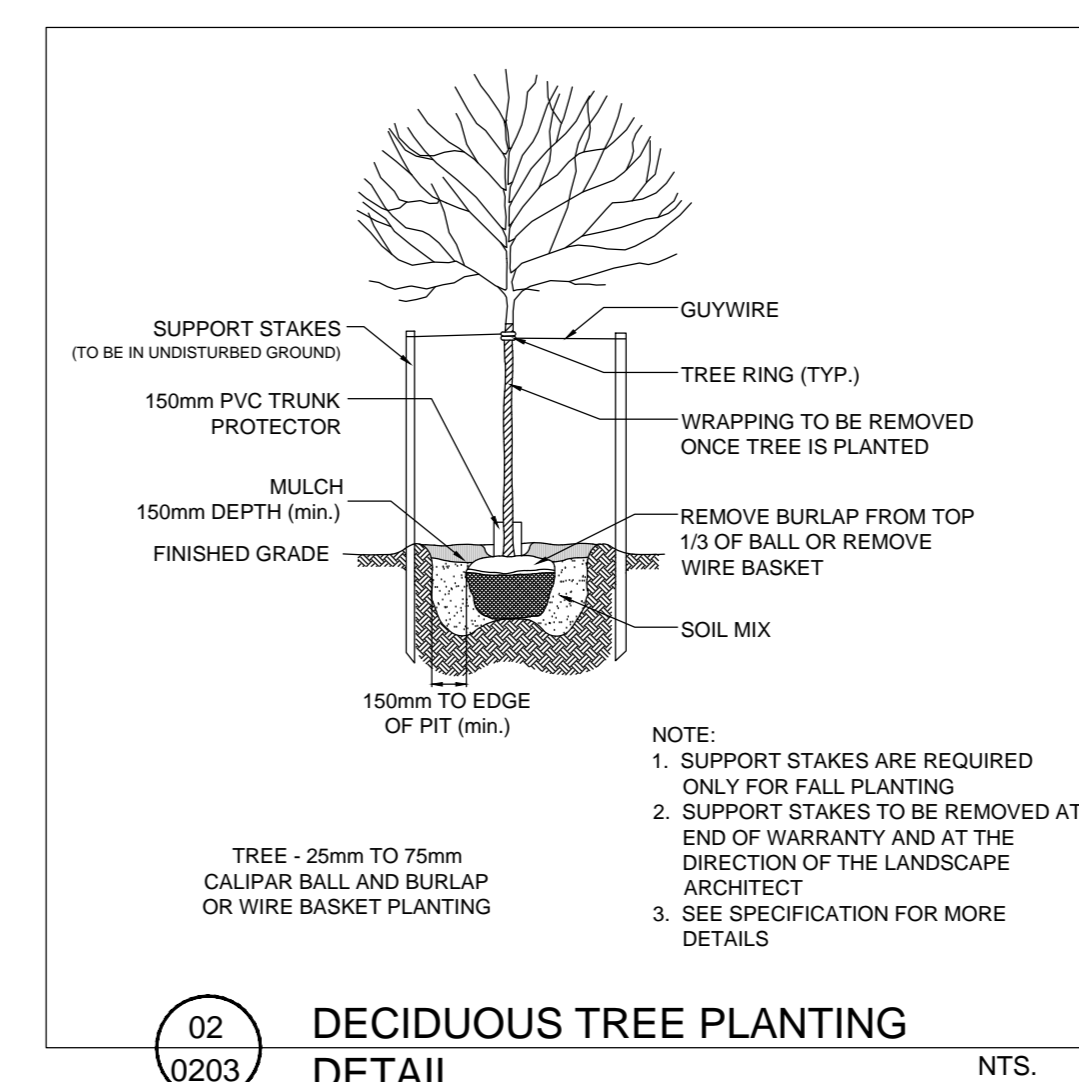
**NOTES:**  
1) INSTALLED BY OTHERS  
2) RECOMMEND REUSE OF OLD DURISOL PANELS TO FACE SLOPE SIDE OF JUNCTION.



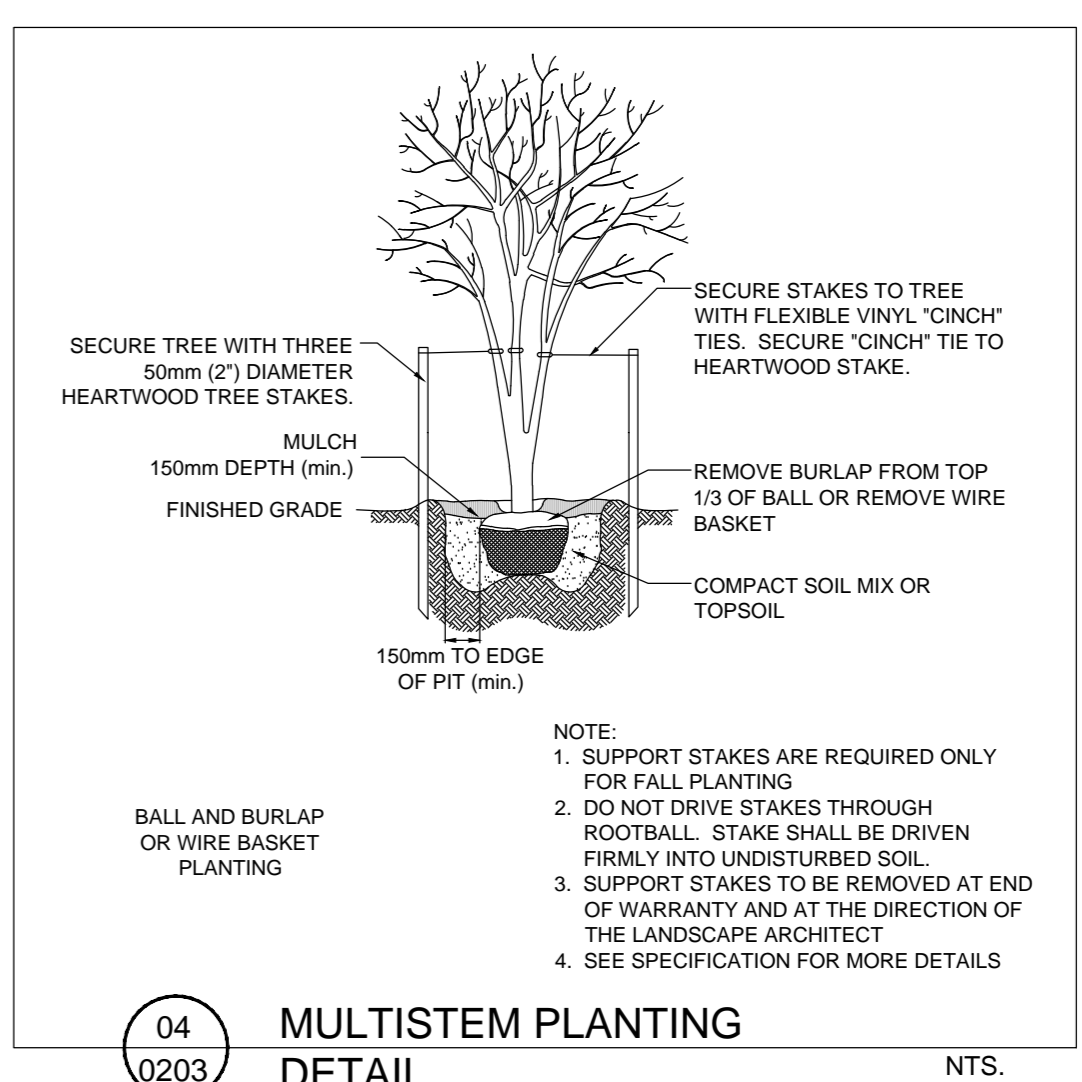
01 0203 CONIFEROUS TREE PLANTING DETAIL NTS.



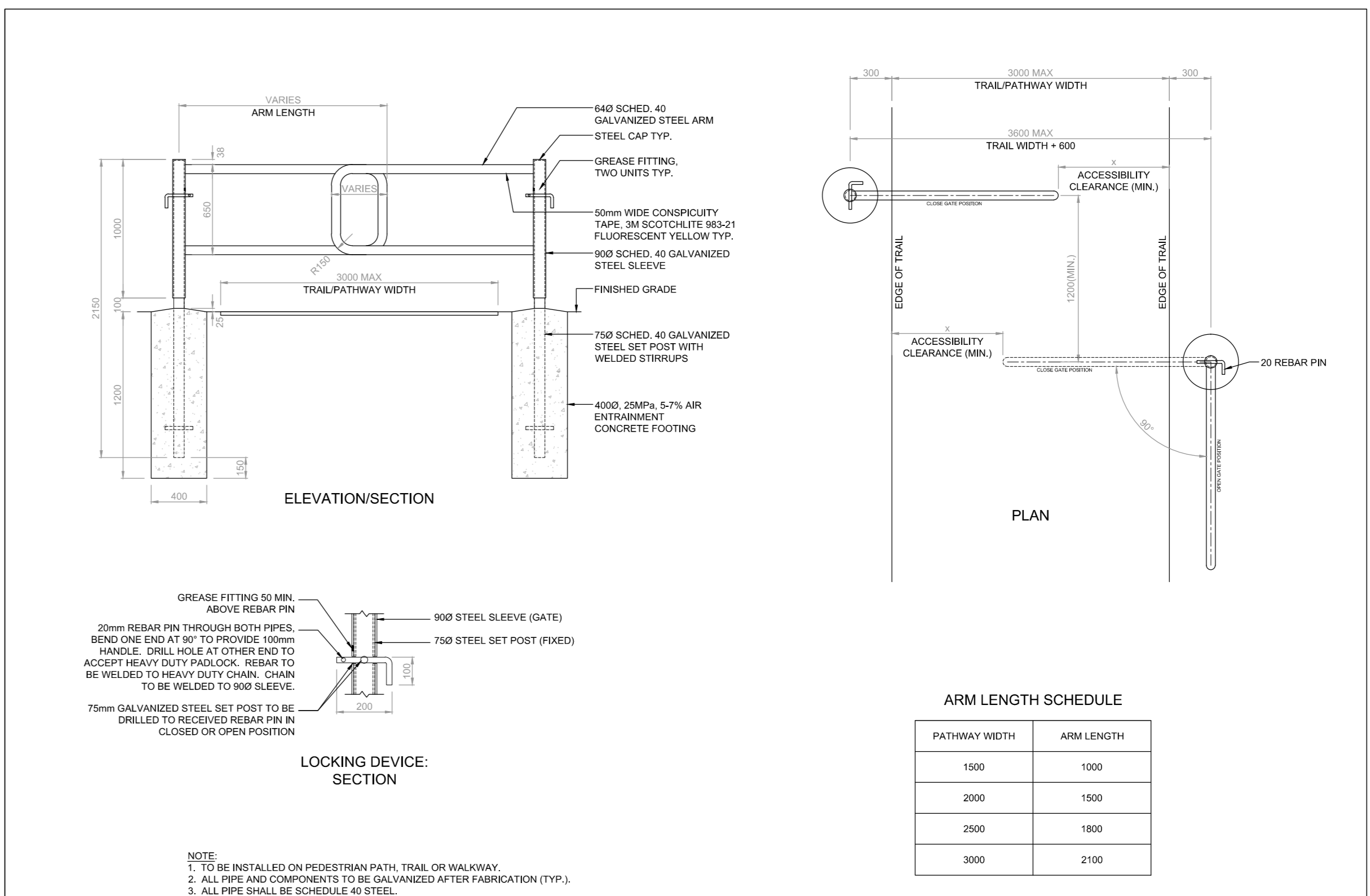
03 0203 SHRUB BED PLANTING DETAIL NTS.



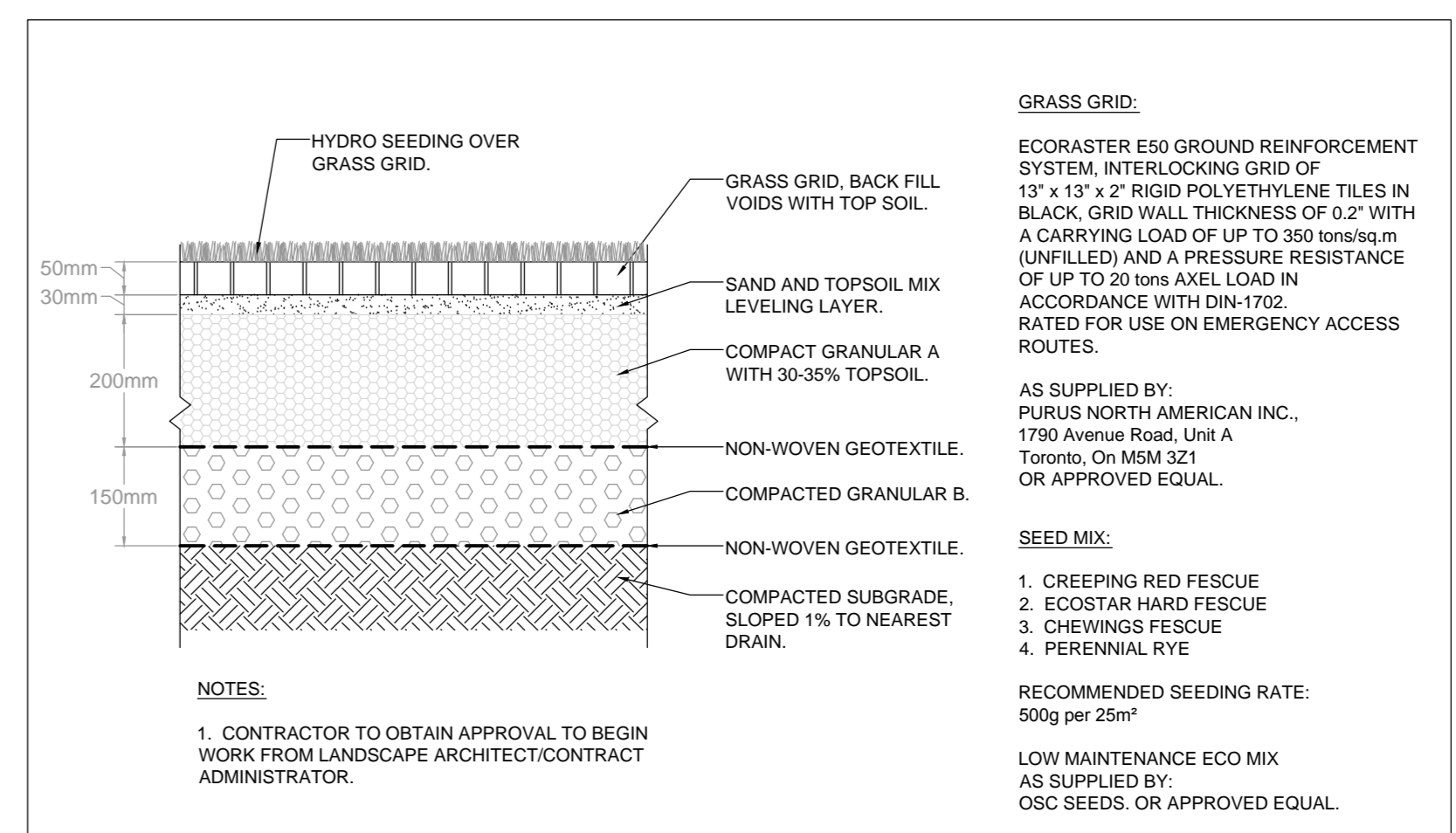
02 0203 DECIDUOUS TREE PLANTING DETAIL NTS.



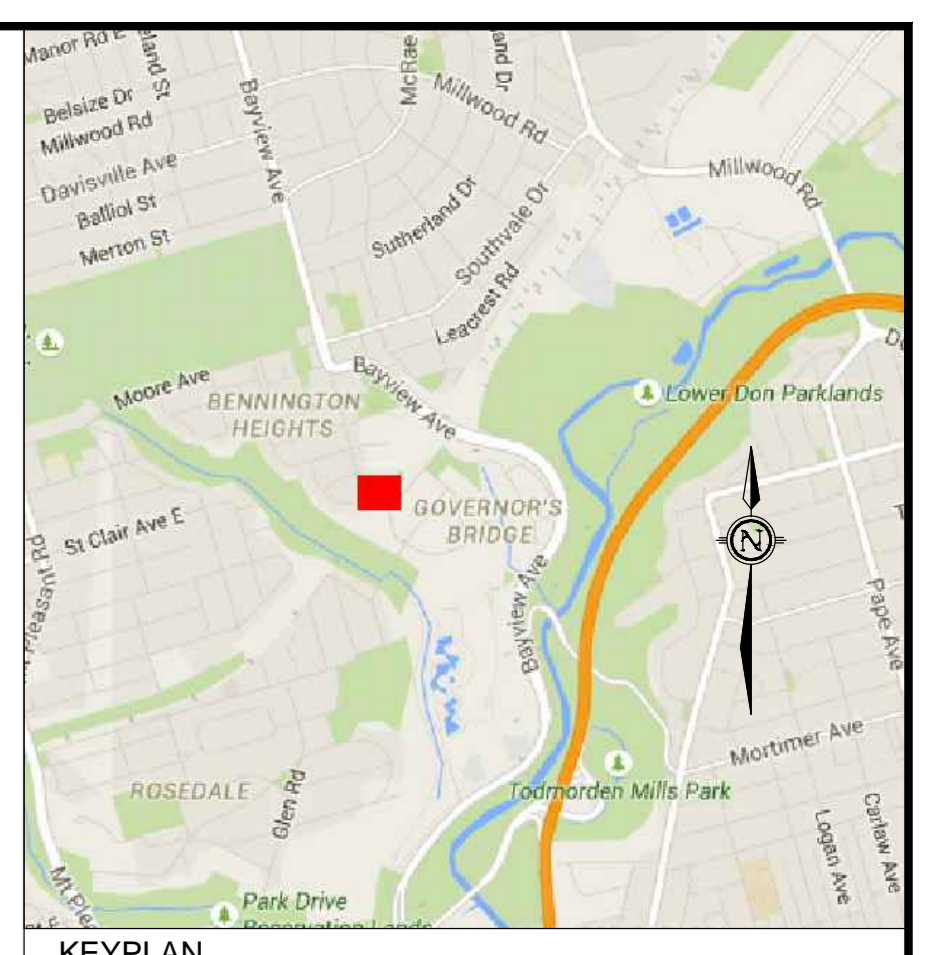
04 0203 MULTISTEM PLANTING DETAIL NTS.



05 0203 PEDESTRIAN GATE DETAIL NTS.



06 0203 GRASS GRID EMERGENCY ACCESS ROAD DETAIL NTS.



KEYPLAN

- LEGEND:**
- 3 MP QUANTITY OF PLANTS REQUIRED
  - MP SPECIES IDENTIFIED ON THE PLANT LIST
  - EXISTING VEGETATION
  - EXISTING VEGETATION TO BE REMOVED
  - PROPOSED MEDIUM TO LARGE DECIDUOUS PLANT SPECIES
  - PROPOSED SMALL TO MEDIUM DECIDUOUS PLANT SPECIES
  - PROPOSED CONIFEROUS PLANT SPECIES
  - PROPERTY LINE
  - PROPOSED DRIVEWAY/ACCESS ROAD
  - RESODDING AREA

- GENERAL NOTES:**
- CLEARLY MARK, STAKE OUT AND VERIFY ALL UNDER AND ABOVE GROUND SERVICE UTILITIES AT WORK SITE. PROOF OF VERIFICATION OR CERTIFICATION IS REQUIRED BY THE LANDSCAPE ARCHITECT OR CONTRACT ADMINISTRATOR.
  - VERIFY ALL SITE CONDITIONS WITH LANDSCAPE PLANS AND NOTIFY THE LANDSCAPE ARCHITECT OR CONTRACT ADMINISTRATOR OF ANY DISCREPANCIES. OBTAIN WRITTEN DIRECTION FROM LANDSCAPE ARCHITECT OR CONTRACT ADMINISTRATOR PRIOR TO START OF WORK.
  - VERIFY LANDSCAPE PLANS AND CONSTRUCTION WORK METHODS OR REGULATIONS AND NOTIFY LANDSCAPE ARCHITECT OR CONTRACT ADMINISTRATOR OF ANY DISCREPANCIES OR CONFLICTS. OBTAIN WRITTEN DIRECTION FROM LANDSCAPE ARCHITECT OR CONTRACT ADMINISTRATOR PRIOR TO START OF WORK.
  - COMPLETE ALL CONSTRUCTION AND INSTALLATION IN ACCORDANCE WITH LOCAL CONSTRUCTION REGULATIONS, BY-LAWS AND CODES. ANY CONTRAVENTION OF LOCAL CONSTRUCTION REGULATIONS, BY-LAWS OR CODES IS THE RESPONSIBILITY OF THE CONTRACTOR.
  - PREVENT AND AVOID DAMAGING EXISTING LANDSCAPE, STRUCTURES AND ADJACENT PROPERTIES. NOTIFY LANDSCAPE ARCHITECT OR CONTRACT ADMINISTRATOR OF ANY DAMAGES. MAKE GOOD ALL DAMAGES AT NO EXPENSE TO HYDRO ONE.
  - ALL CONSTRUCTION WORKS ARE TO BE PERFORMED IN ACCORDANCE WITH THE PLANS AND SPECIFICATIONS PREPARED FOR THIS PROJECT.

- ADDITIONAL NOTES:**
- PLANTING ON THE CITY OF TORONTO ROAD ALLOWANCE DEPENDENT ON APPROVAL OF ENCROACHMENT PERMIT.
  - WARNING: OVERHEAD CONDUCTORS - SEE LIMITS OF APPROACH FOR SAFE CLEARANCES. RESTRICT AND LIMIT THE USE OF CRANES AND OTHER OVERHEAD EQUIPMENT. OBTAIN APPROVAL FROM LACA BEFORE PROCEEDING WITH WORK.

hydro one **Hydro One Networks Inc.**  
ENGINEERING & CONSTRUCTION SERVICES

Project: **BAYVIEW JUNCTION** L73278  
Contract No.:  
Title: **STATION EXTENSION LANDSCAPE CONCEPTUAL PLAN**  
Date: 2015.12.21  
Scale: 1:125  
Drawing No.:  
Sheet No.: 02